

2019

.....	1
.....	6
.....	6
.....	9
.....	13
.....	16
.....	16
.....	17
.....	17
.....	18
.....	20
.....	21
.....	22
.....	23
.....	23
.....	25
.....	27
.....	27



	28
	28
1332	29
	31
	31
	32
	32
	33
	33

2012

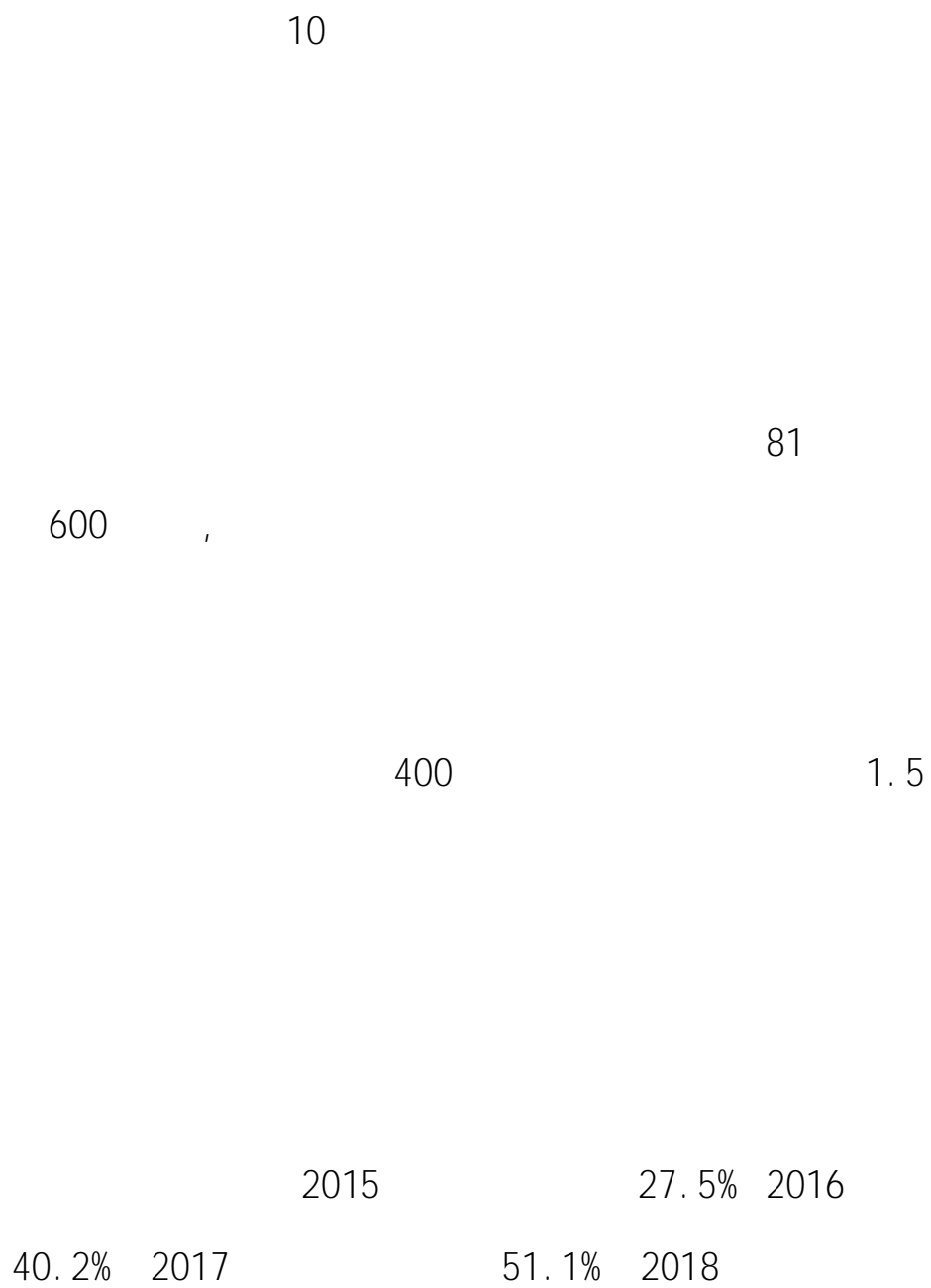
3

26

53

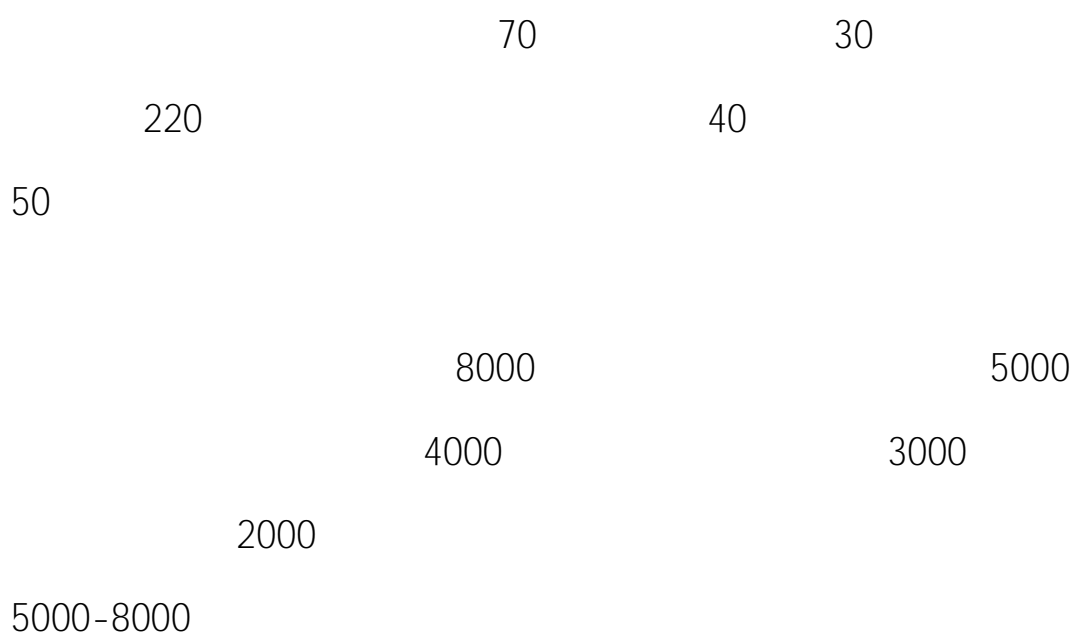
25.2

7



55% 2019

58%



20

2019

2019

2019

2019

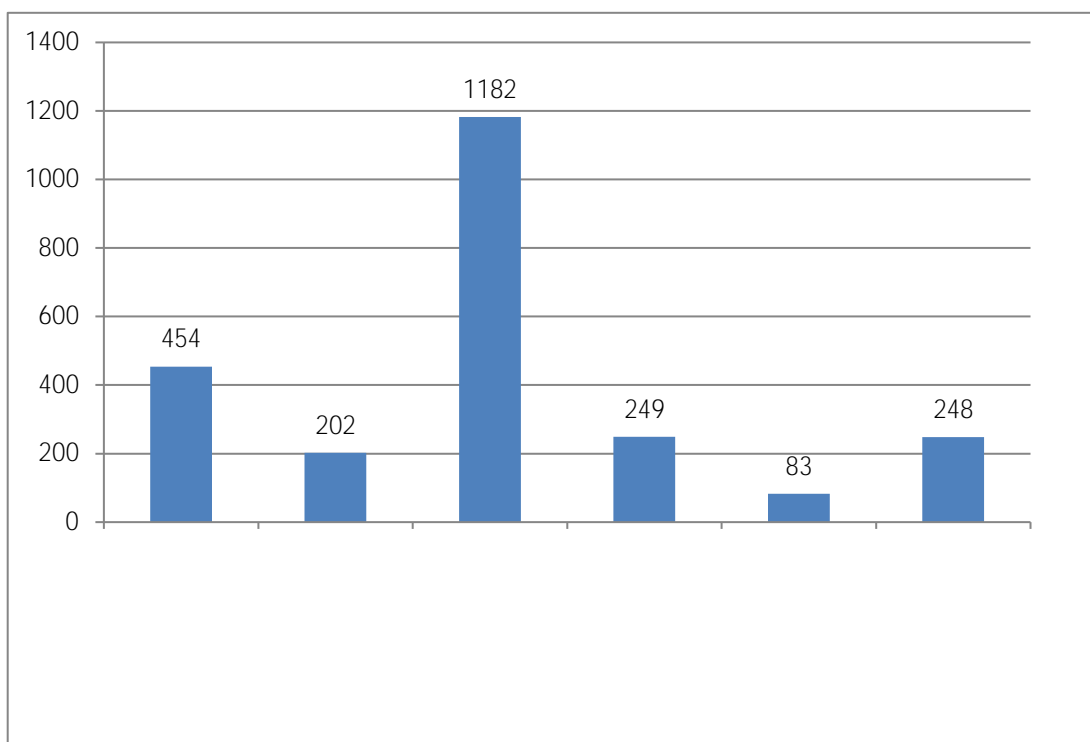
2019 12 10

2019

2019 2418 1987
431

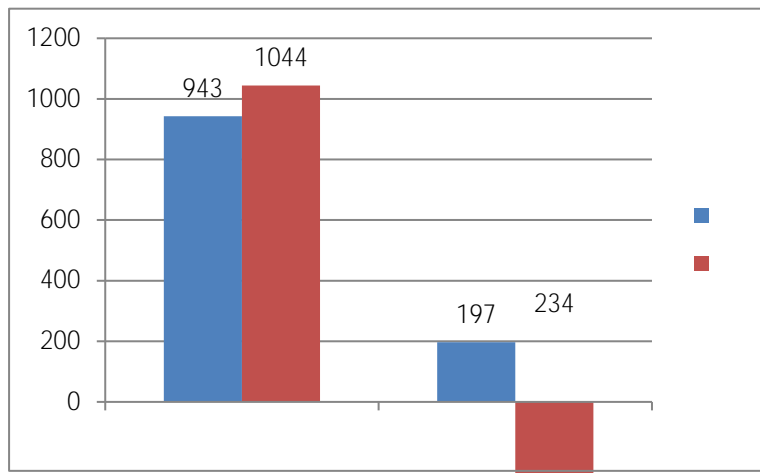
2019 6

2-1



2-1

2019 24



2-3

2019

12

2311

107

2-1

	10	0.41%		65	2.69%
	1	0.04%		14	0.58%
	2	0.08%		1	0.04%
	1	0.04%		2	0.08%
	2311	95.57%		1	0.04%
	9	0.37%		1	0.04%

2-1

2019

19

1960

57

46

2-2

	16	0.66%		66	2.73%
	26	1.08%		1	0.04%
	5	0.21%		66	2.73%
	10	0.41%		29	1.20%
	20	0.83%		5	0.21%
	32	1.32%		16	0.66%
	1960	81.06%		38	1.57%
	10	0.41%		46	1.90%
	7	0.29%		57	2.36%
	8	0.33%			

2-2

2019 2418 2019 8
31 93.9%
1987 93.4% 431
96.3% 2-3 2019

	1987	1855	132	93.4%
	431	415	16	96.3%
	2418	2270	148	93.9%

2-3 2019

2019 12 10
92.3% 91.9%

94.4%

2-4 2019

2-4 2019

2-4 2019

1.6%

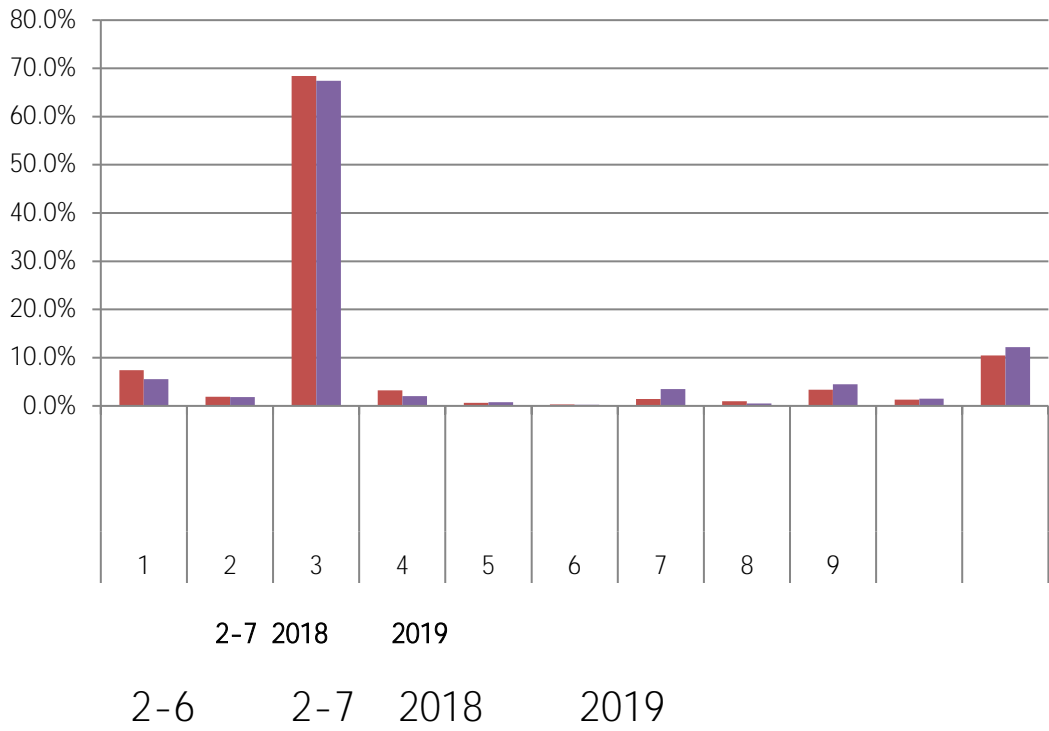
2046 499. 10

2-6 2019

2019

2-6 2-7

2-6 2018



1

24

2018

1262

60.7% 2019

1382

61.9%

2-7

2018

1.2

	1382	54	86	164	76	60	34	32	35	29	42	28	
	61.9%	2.4%	3.9%	7.3%	3.4%	2.7%	1.5%	1.4%	1.6%	1.3%	1.9%	1.3%	
	26	25	10	8	8	2	8	6	3	19	13	10	
	1.2%	1.1%	0.4%	0.4%	0.4%	0.1%	0.4%	0.3%	0.1%	0.9%	0.6%	0.4%	

2-7 2019

2

2-8

	851	88	46	53	91	25	18	27	11	14	58	14	13	73
	61.6%	6.4%	3.3%	3.8%	6.6%	1.8%	1.3%	2.0%	0.8%	1.0%	4.2%	1.0%	0.9%	5.3%

2-8 2019

2019

2019

2019

2019

90.3%

3.6%

6.05%

3-12019

3-1 2019

2019 29.06%

34.12%

3-2

3-2 2019

1.8% 6000-9000

5% 4000-5000

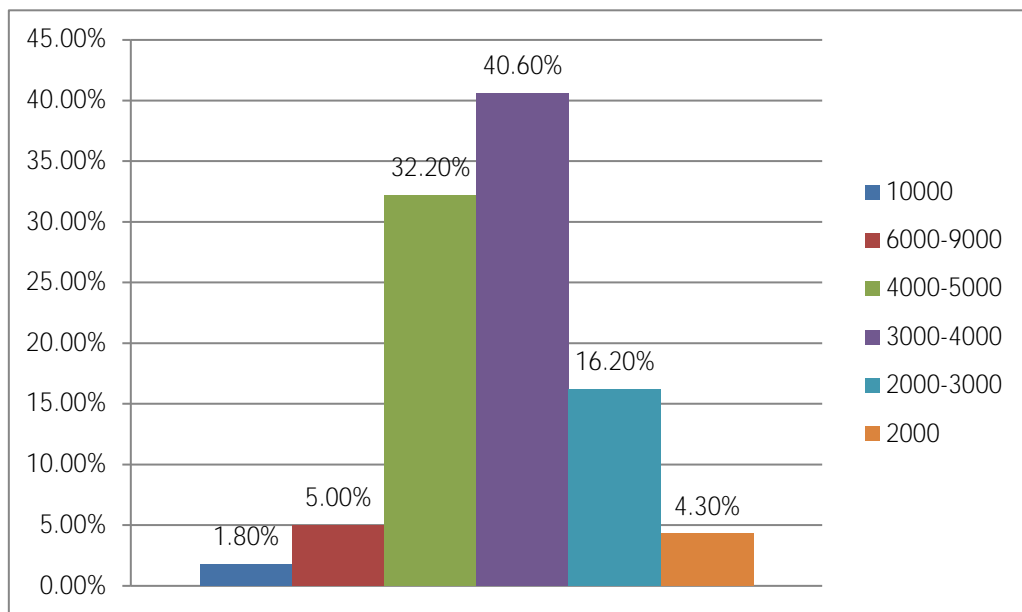
2000-3000

16.2%

2000

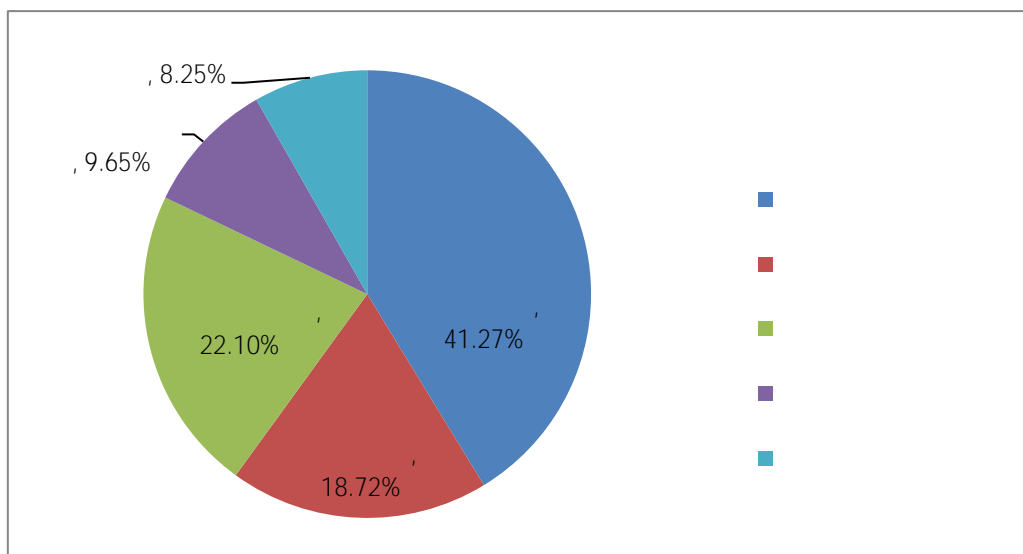
4.3%

3-3



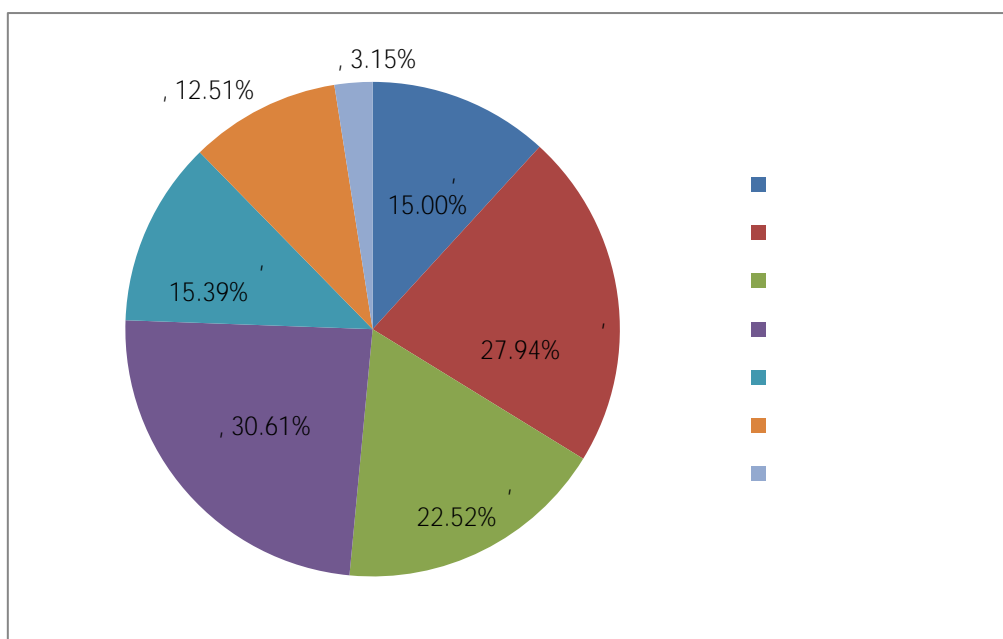
3-3 2019

3-4



3-4

3-5



3-5

2019

38.78%

19.98%

18.86%

18.6%

13.29%

3-7

201T Q EMC /Span <</MCID 16/Lang 234

3-8

2019

221

216

4-1

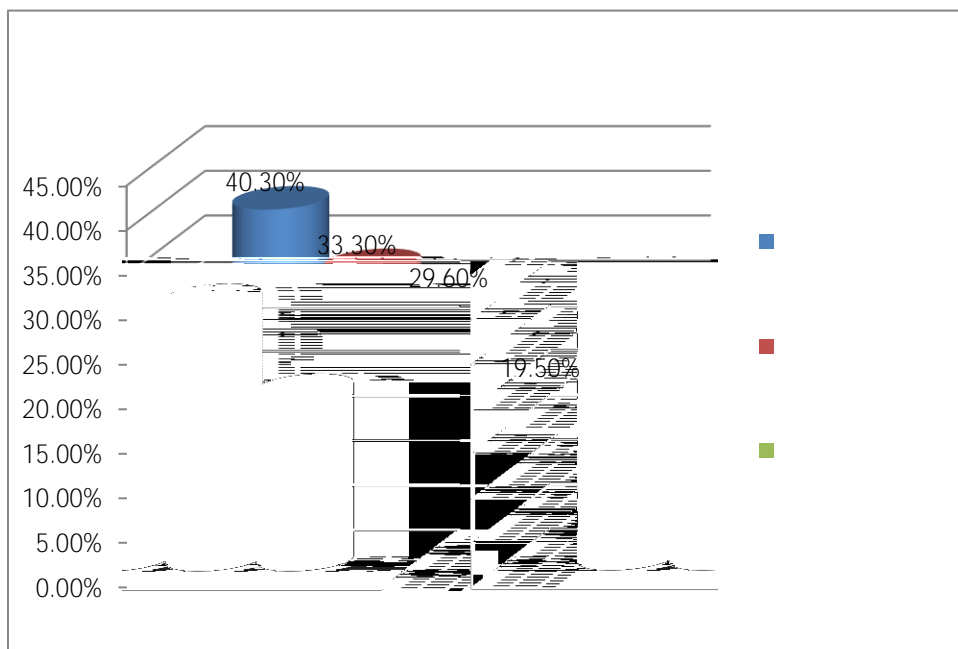
4-1

†

ä

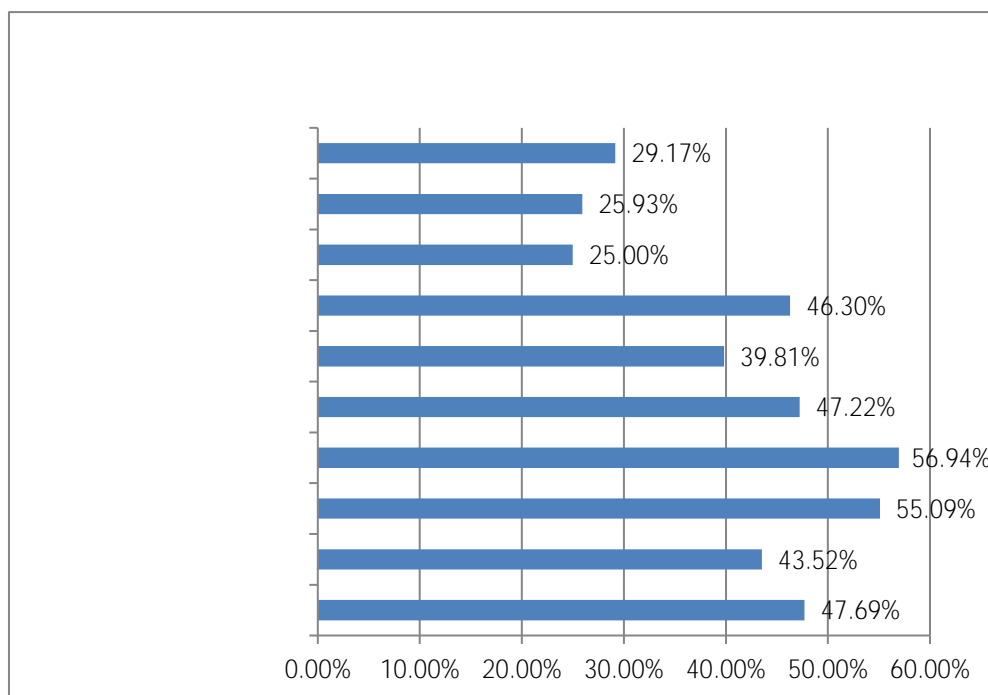
4-2

216



4-2

()



4-3

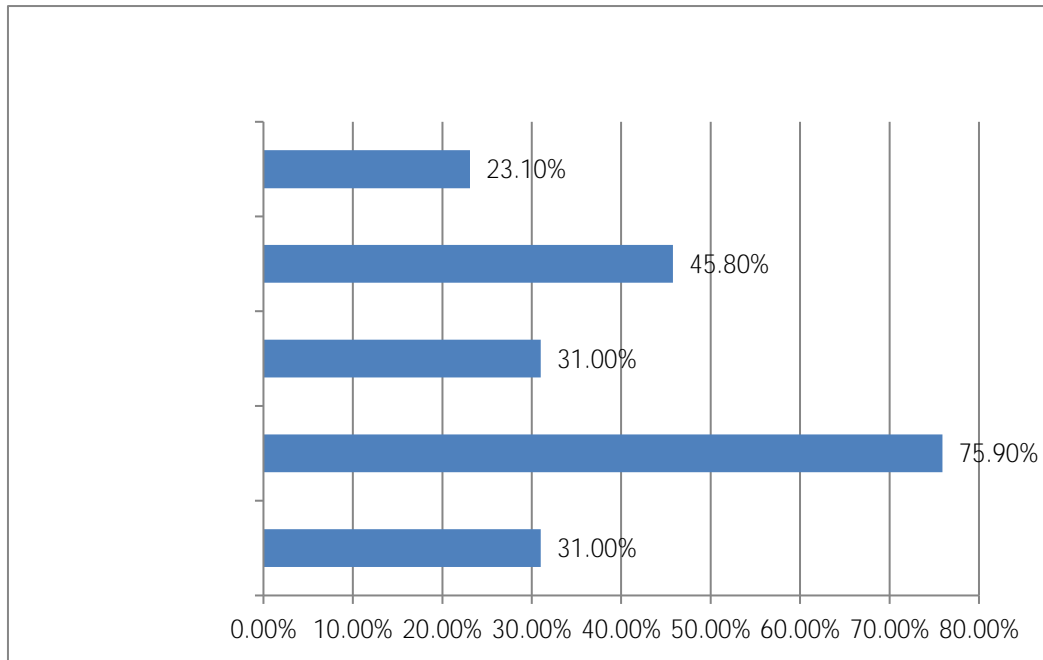
()

4-3

56.94%

55.09%

47.69%



4-4

()

4-4

2019 53

38

32

1332

1332

2020

11

17

130

12

21

25

12 22

2019 2020

70

300

8000

120

2019

2019

30

46

29

2019

2019

22

2019

32

2019 227

2020

388

1332

2017
50 23 27 2018
41 10
31 2020 3 5
2019 44 7
21 16 2020 11 30
2019
160 841
133
2019
4
3

